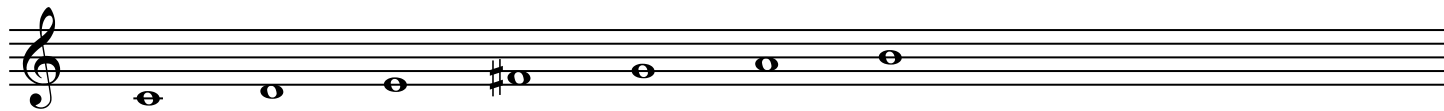


# 7 Modes (From Bright to Dark)

Lydian

Major



Ionian

Major



Mixolydian

Dominant 7



Dorian

Minor



Aeolian

Minor



Phrygian

Minor



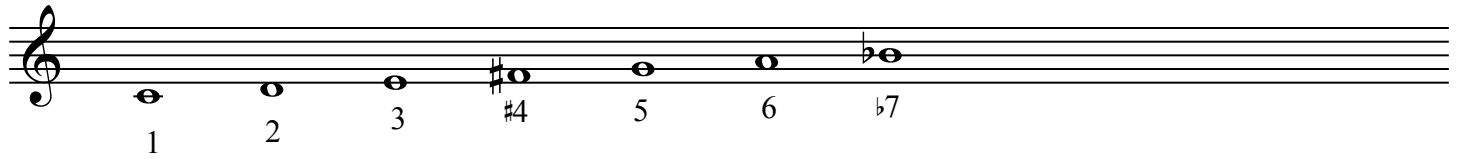
Locrian

Minor



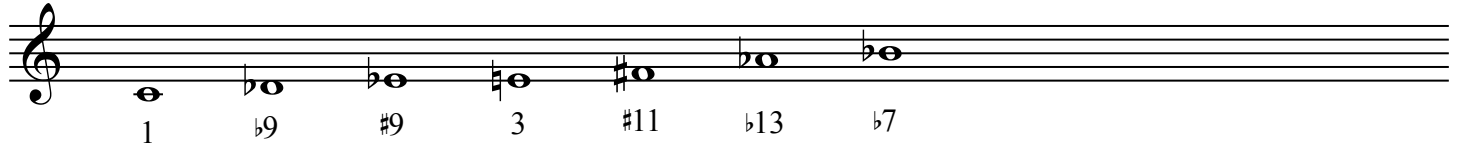
# Additional Scales

## Lydian $\flat 7$



Musical notation for the Lydian  $\flat 7$  scale. The scale is written on a single treble clef staff. The notes are: 1 (C), 2 (D), 3 (E),  $\sharp 4$  (F $\sharp$ ), 5 (G), 6 (A), and  $\flat 7$  (B $\flat$ ). The notes are spaced evenly across the staff.

## Altered



Musical notation for the Altered scale. The scale is written on a single treble clef staff. The notes are: 1 (C),  $\flat 9$  (D $\flat$ ),  $\sharp 9$  (E $\sharp$ ), 3 (F),  $\sharp 11$  (G $\sharp$ ),  $\flat 13$  (A $\flat$ ), and  $\flat 7$  (B $\flat$ ). The notes are spaced evenly across the staff.

## Symmetrical Diminished



Musical notation for the Symmetrical Diminished scale. The scale is written on a single treble clef staff. The notes are: 1 (C),  $\flat 9$  (D $\flat$ ),  $\sharp 9$  (E $\sharp$ ), 3 (F),  $\sharp 4$  (G $\sharp$ ), 5 (A), 6 (B), and  $\flat 7$  (C $\flat$ ). The notes are spaced evenly across the staff.